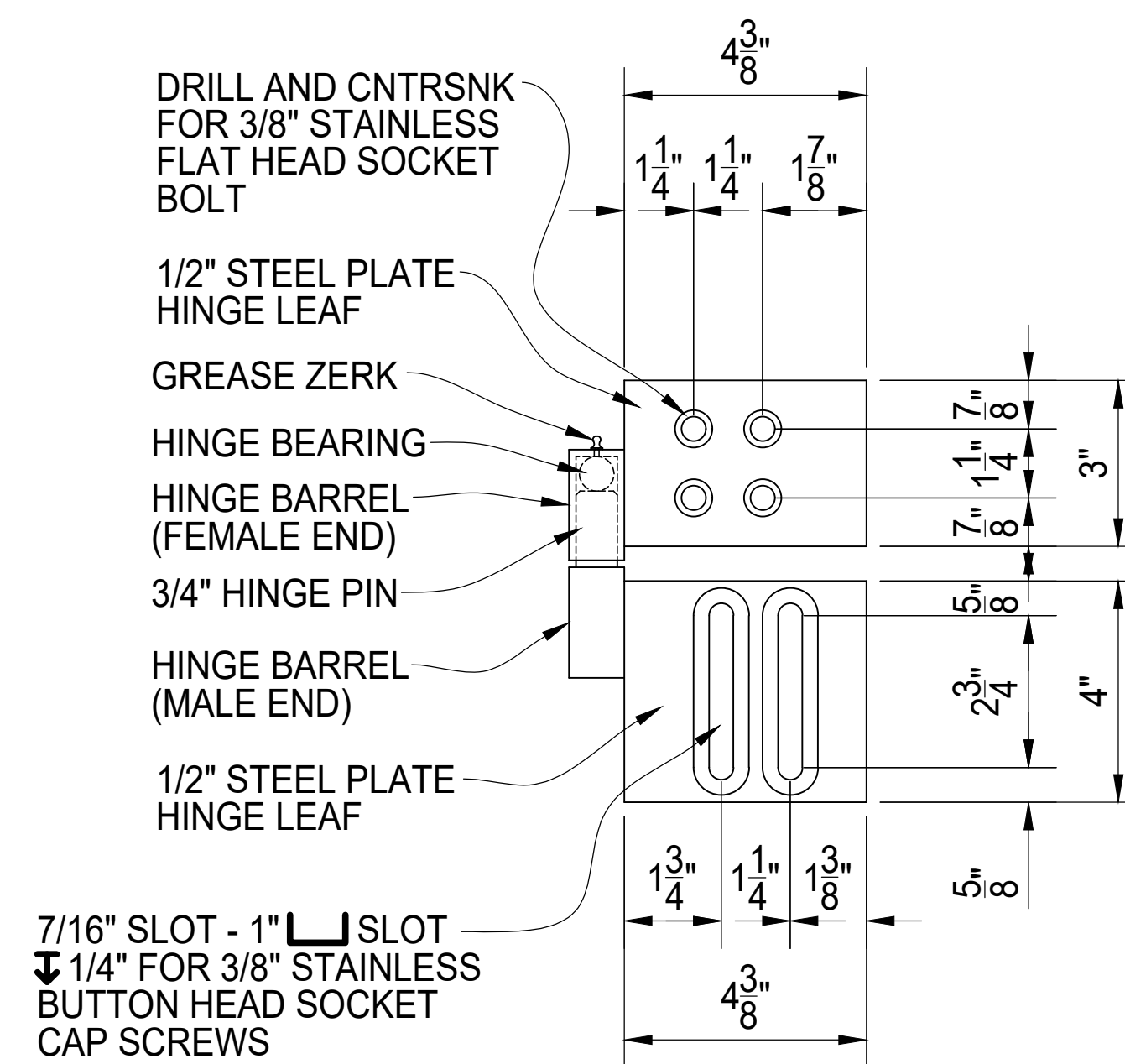


FRONT



SIDE

GORILLA HINGE III DETAIL

ZERK END IS FEMALE AND BOLTS TO GATE FRAME.
 MALE END IS TO BE BOLTED TO GATE POST.
 MALE END HINGE LEAF PLATE IS SLOTTED TO
 ALLOW FOR 3/4" ADJUSTMENT UP OR DOWN FOR
 PROPER ALIGNMENT.
 A "STOP" CAN BE FIELD WELDED TO THE GATE POST
 ABOVE THE HINGE TO PREVENT LIFT OFF.
 GORILLA HINGES ARE PRE-GREASED, BUT SHOULD
 BE GREASED AGAIN UPON INSTALLATION AND
 PERIODICALLY TO MAINTAIN PROPER FUNCTION.

REV	DESCRIPTION	DATE



GORILLA HINGE III HINGE DETAILS

PALM SHIELD PROJECT #	GH2022-11-04	CLIENT PROJECT #	
CHKD BY		DRAWN BY	PB
	SCALE: N.T.S.	DATE	11/04/2022
		REV	
		SHEET #	01