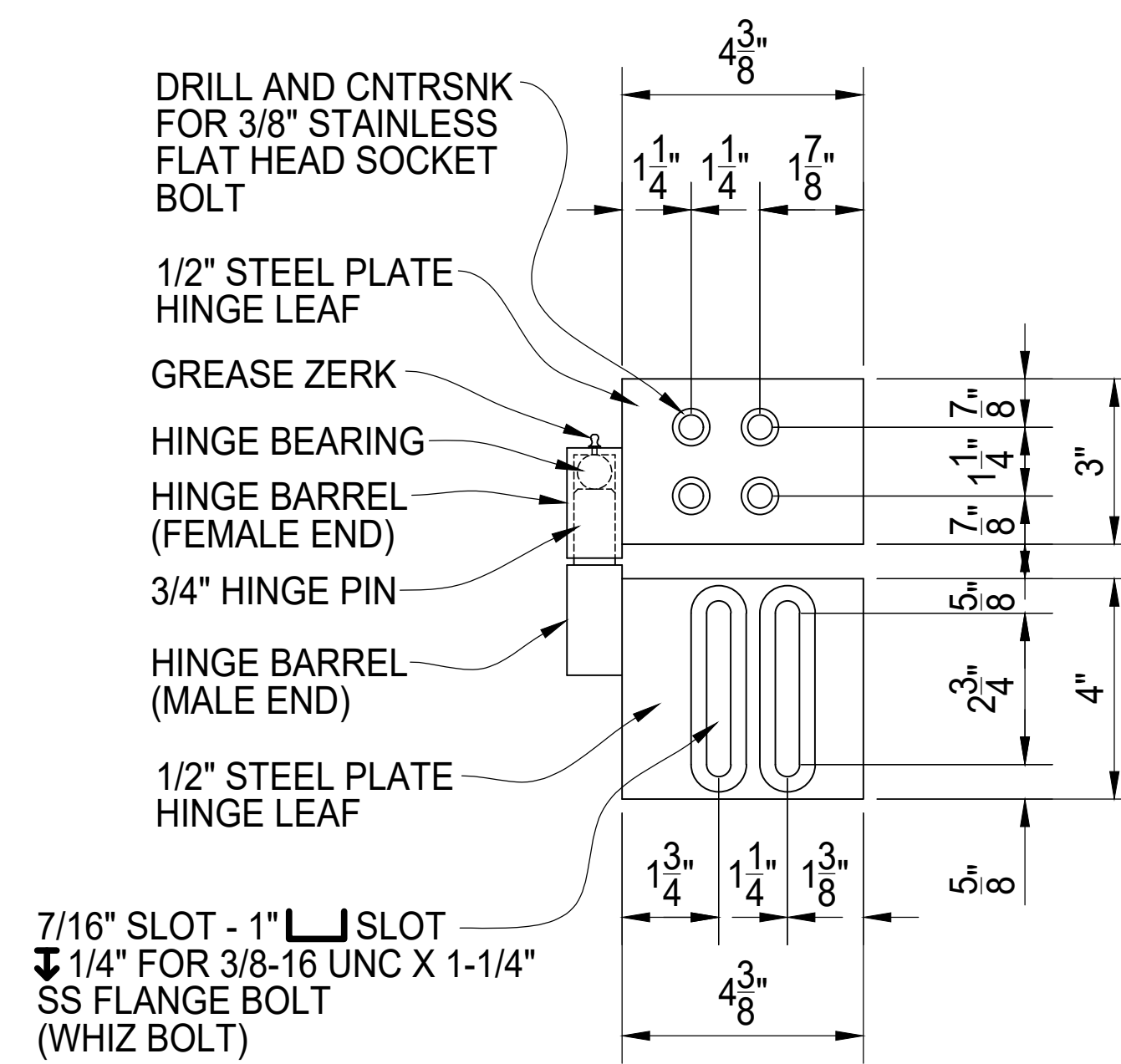


**FRONT**



**SIDE**

### GORILLA HINGE 3000 DETAIL

ZERK END IS FEMALE AND BOLTS TO GATE FRAME.  
 MALE END IS TO BE BOLTED TO GATE POST.  
 MALE END HINGE LEAF PLATE IS SLOTTED TO  
 ALLOW FOR 3/4" ADJUSTMENT UP OR DOWN FOR  
 PROPER ALIGNMENT.

A "STOP" CAN BE FIELD WELDED TO THE GATE POST  
 ABOVE THE HINGE TO PREVENT LIFT OFF.  
 GORILLA HINGES ARE PRE-GREASED, BUT SHOULD  
 BE GREASED AGAIN UPON INSTALLATION AND  
 PERIODICALLY TO MAINTAIN PROPER FUNCTION.

REV	DESCRIPTION	DATE



### GORILLA HINGE 3000 HINGE DETAILS

PALM SHIELD PROJECT #	GH2022-11-04	CLIENT PROJECT #	
CHKD BY		SCALE: N.T.S.	DRAWN: PB DATE: 11/04/2022 REV: SHEET # 01